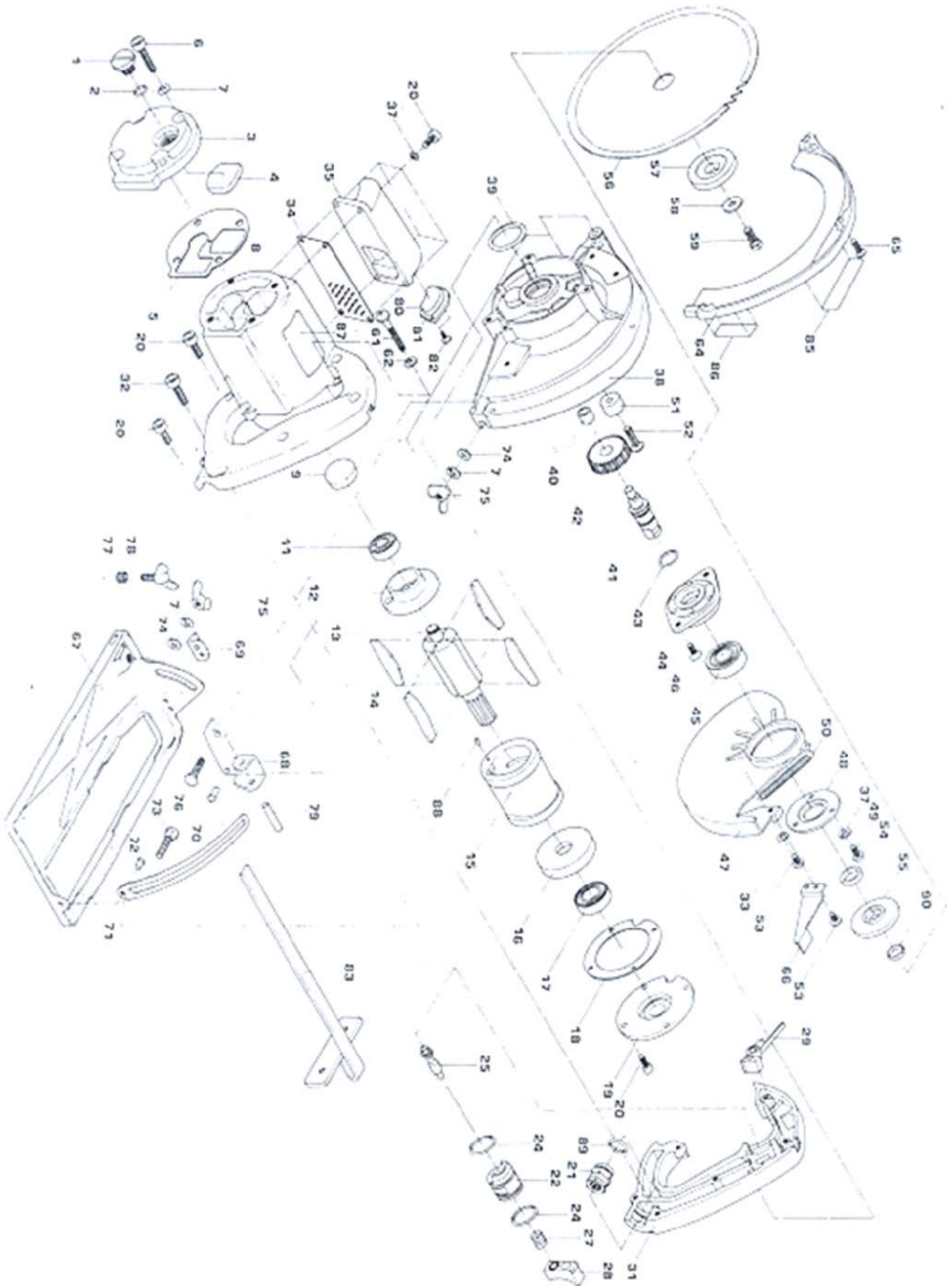




GP-0827

7-1/4" AIR CIRCULAR SAW



Ph: 1300 792 997 or +61 7 3272 7999
Fax: 1300 798 189 or +61 7 3272 7982
sales@air-allied.com.au www.air-allied.com.au



GP-0827 7-1/4" AIR CIRCULAR SAW

<u>PARTS</u>	<u>DESCRIPTION</u>	<u>PARTS</u>	<u>DESCRIPTION</u>
<u>NO.</u>		<u>NO.</u>	
01.	OILER PLUG	44.	BEARING HOLDER
02.	O-RING	45.	BALL BEARING
03.	REAR COVER GASKET	46.	(+) FLAT COUNTERSUNK SCREW (2)
04.	OILER FELT	47.	SAFETY COVER
05.	REAR COVER GASKET	48.	BEARING CAP
06.	CAP BOLT (4)	49.	(+) BUTTON HEAD SCREW (3)
07.	SPRING WASHER (6)	50.	RETURN SPRING
08.	MOTOR HOUSING	51.	CUSHION
09.	BEARING CAP	52.	(+) FLAT COUNTERSUNK SCREW
11.	BALL BEARING	53.	(+) BUTTON HEAD SCREW (2)
12.	REAR END PLATE	54.	DISTANCE PIECE
13.	ROTOR	55.	WASHER (A)
14.	ROTOR BLADE (4)	57.	WASHER (B)
15.	CYLINDER	58.	WASHER
16.	FRONT END PLATE	59.	FLANGE RETAINING SCREW
17.	BALL BEARING	61.	(+) BUTTON HEAD SCREW (3)
18.	MOTOR HOUSING GASKET	62.	SPRING WASHER (3)
19.	MOTOR RETAINING PLATE	64.	SAW COVER
20.	CAP BOLT (10)	65.	(+) BUTTON HEAD SCREW
21.	INLET	66.	LEVER
22.	THROTTLE VALVE CASING	67.	BASE ASSY. (#67 ~ 72)
24.	O-RING (2)	73.	SQUARE NECK BOLT
25.	VALVE STEM ASSY.	74.	PLAIN WASHER (2)
27.	SPRING	75.	WING NUT (2)
28.	TRIGGLE	76.	SQUARE NECK BOLT
29.	TRIGGLE LOCK	77.	SPRING
31.	HANDLE COVER	78.	SET SCREW
32.	(+) BUTTON HEAD SCREW (8)	79.	SPRING PIN
33.	PLAIN WASHER	80.	MUFFLER FELT
34.	MUFFLER PLATE	81.	EXHAUST DEFLECTOR
35.	SIDE COVER	82.	TAPPING SCREW (2)
37.	SPRING WASHER (7)	83.	GUIDE ASSY.
38.	GEAR COVER	84.	WRENCH (2)
39.	O-RING	88.	SPRING PIN
40.	NEEDLE BEARING	89.	O-RING
41.	SPINDLE	90.	RING
42.	DRIVEN GEAR	99.	TRIGGER ASSY.(#22,24,25,27,28)
43.	O-RING		

305WN



Ph: 1300 792 997 or +61 7 3272 7999
Fax: 1300 798 189 or +61 7 3272 7982
sales@air-allied.com.au www.air-allied.com.au